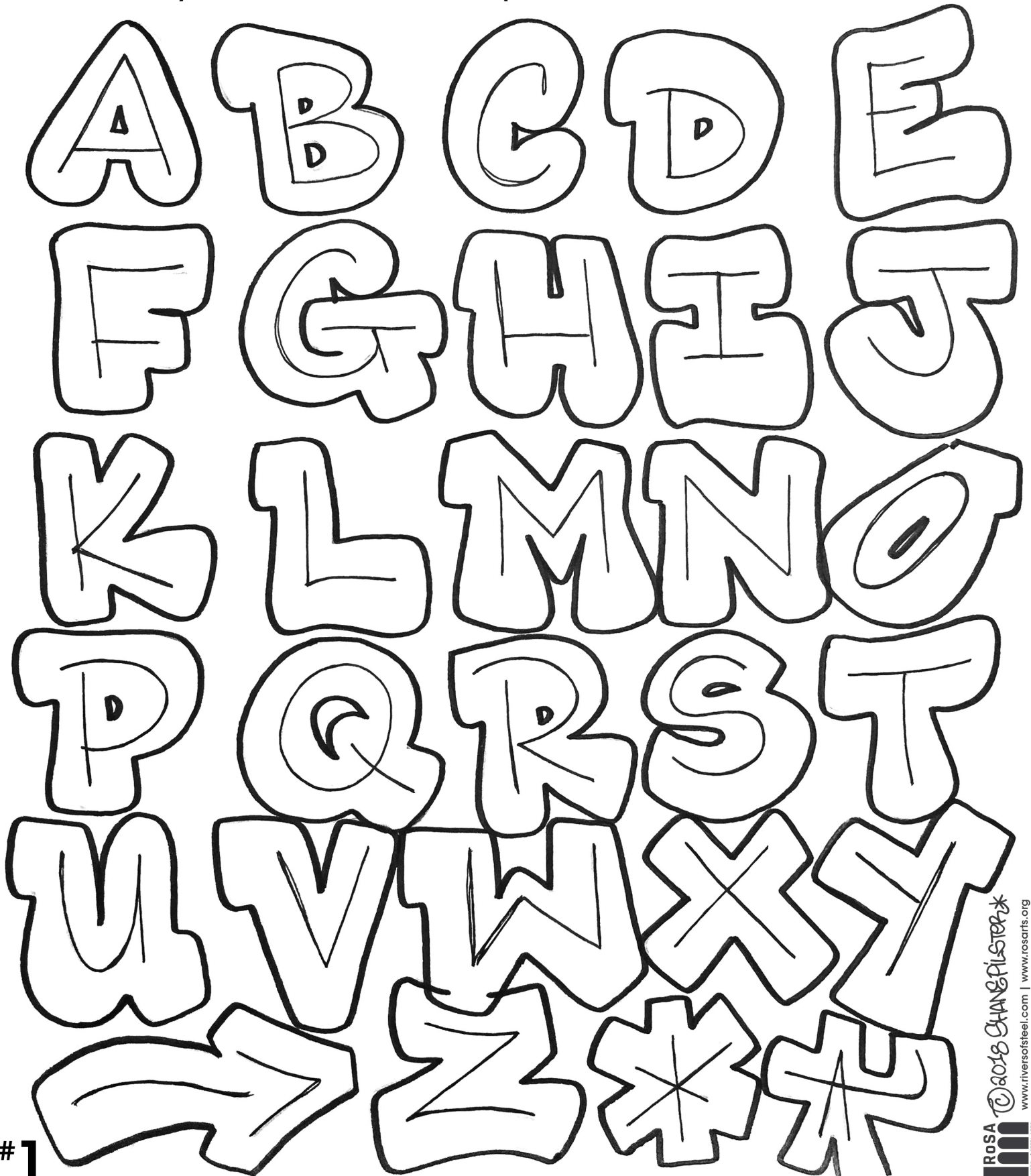
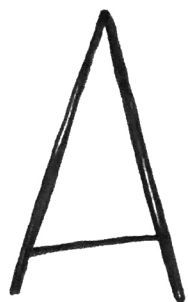


# Draw Your Own Alphabet

1. Start by drawing simple alphabet in pencil; give the letters some space
2. Draw a soft edged outline (like bubble letters) around your letters
3. Experiment with serifs (like the top left of the B, D, H, etc)
4. Trace over your bubble letters with a pen, erase the letters in the middle



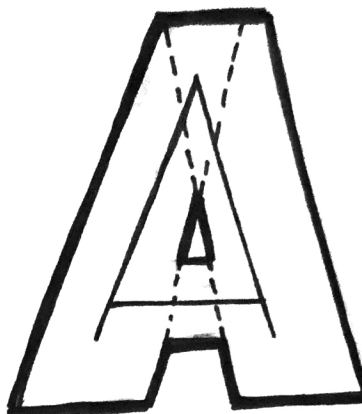
①



Start with a simple letter in PENCIL so you can erase

Make it large so there's room to outline it

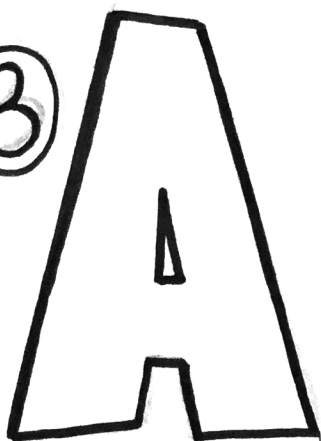
②



Draw lines around the letter

Use parallel lines to follow the letter as guides for the inner parts of the letter (the dotted lines in the example)

③



Erase the original letter and any lines that overlap. This will be the basis of your letter.

Try different styles with the original letter but follow the same principles

④



Try filling in the letter with a gradient or different shapes and colors. Keep the fill colors contrasting to the outline colors so the letter pops.

⑤



Create 3D by drawing equal lines in the same direction from all of the points.

Same length on all the lines from the points

⑥



Connect the 3D lines with the same line angle as from the letter. See the "S" as an example with the same curved line on the letter and on the 3D

⑦



Drop shadows are taking the same shape from the letter and pushing it away from the letter - like if a light was casting a shadow on the letter itself

⑧



You can use 3D to give the letter more dimension, to make it pop off the page. All the lines in the example go the same direction and double up around the corners. Experiment on your own to try out new techniques!



# Create Your Word + 3D

Draw the letters to the word you'd like slightly spaced apart. Outline the letters the same way as the alphabet. Practice drawing a few variations.

Redraw the letters closer together so the bubble letters will overlap. Outline the bubble letters with a pen and erase the overlapping pencil.

Add a drop shadow by redrawing the same letter/shape slightly offset. See the example here with the drop shadow going lower left.

Add a simple 3D at first by drawing a line straight down from any of the points in the letter.

Connect these lines to make 3D.

Experiment with adding different effects to the 3D; maybe adding shapes, colors, lines, fill in the 3D or a combination of any of these.

→ SQUEEZE TOGETHER ←

REIVER

REIVER

REIVER

DROP SHADOW

3D

RACE N

DROP

BLOCK & RELIEF SHADE



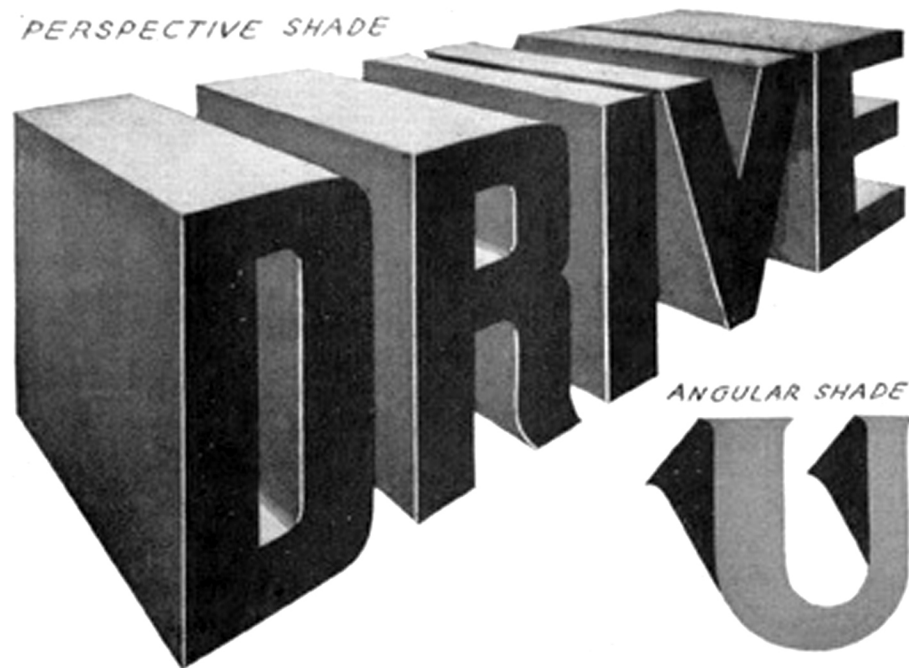
RELIEF SHADE



OFF SHADE



PERSPECTIVE SHADE



ANGULAR SHADE



BLOCK SHADE



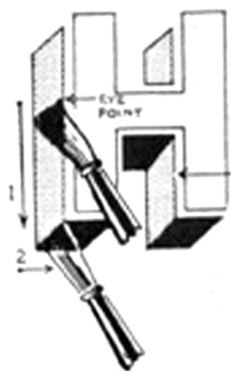
CAST SHADE



SPLIT SHADE



RELIEF



CAST SHADE

DROP SHA

CONVEX



H

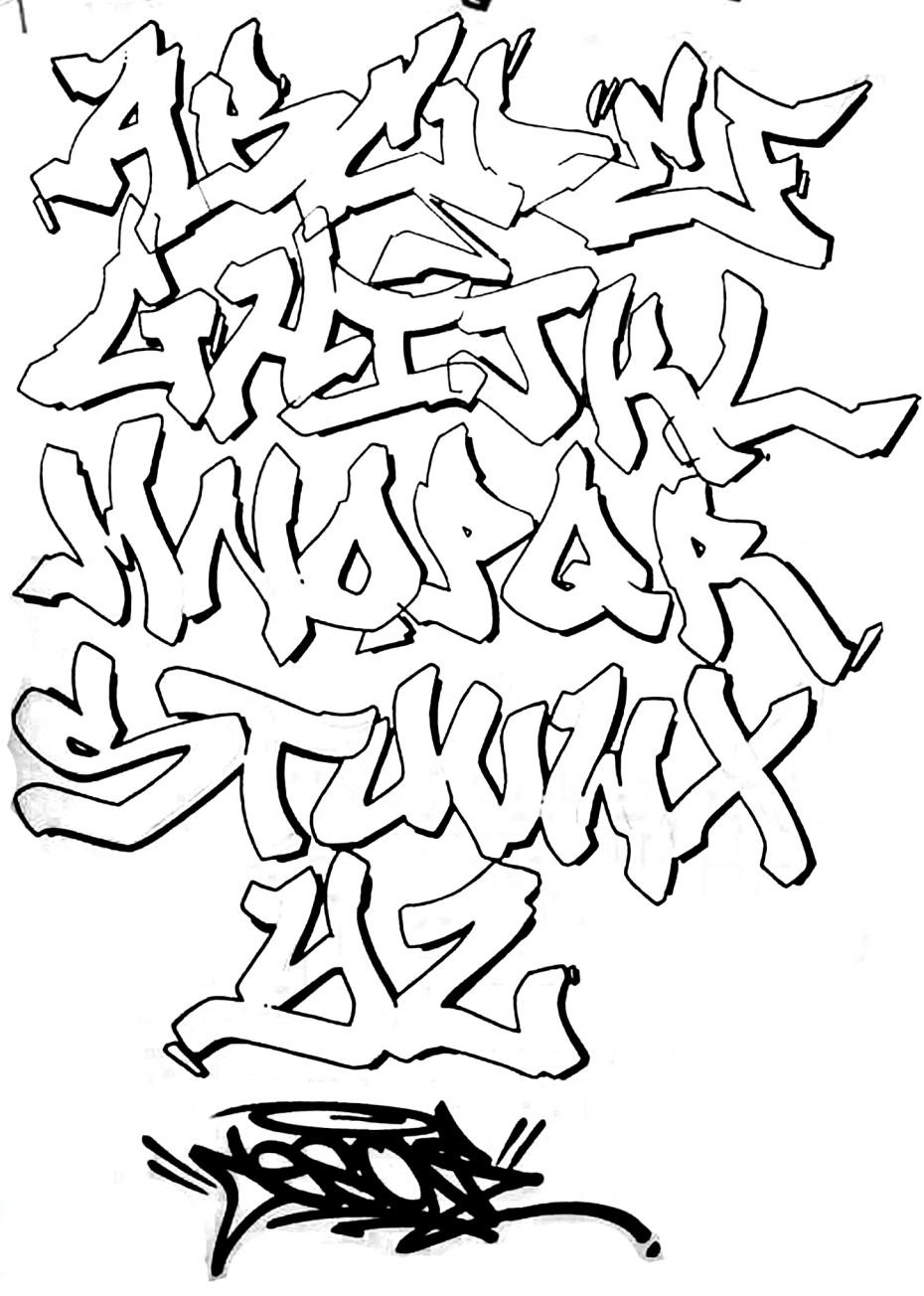
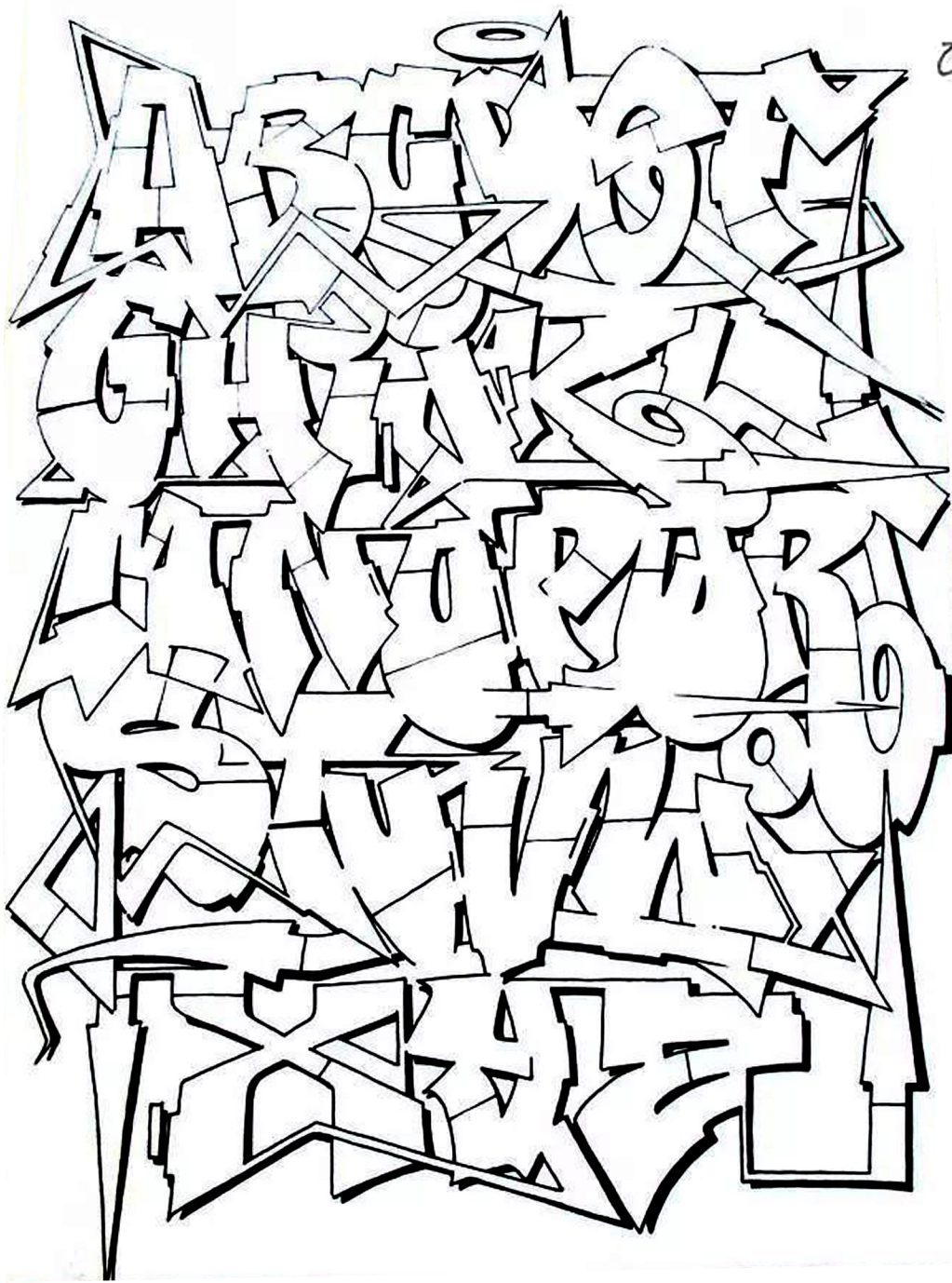
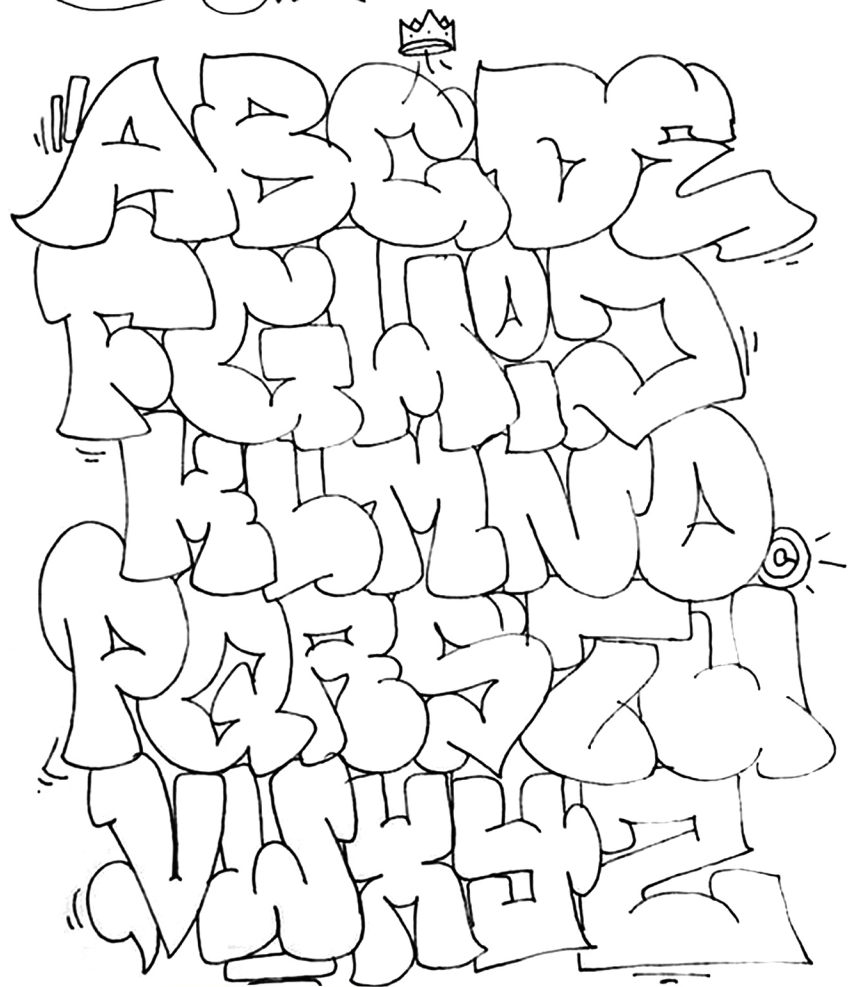
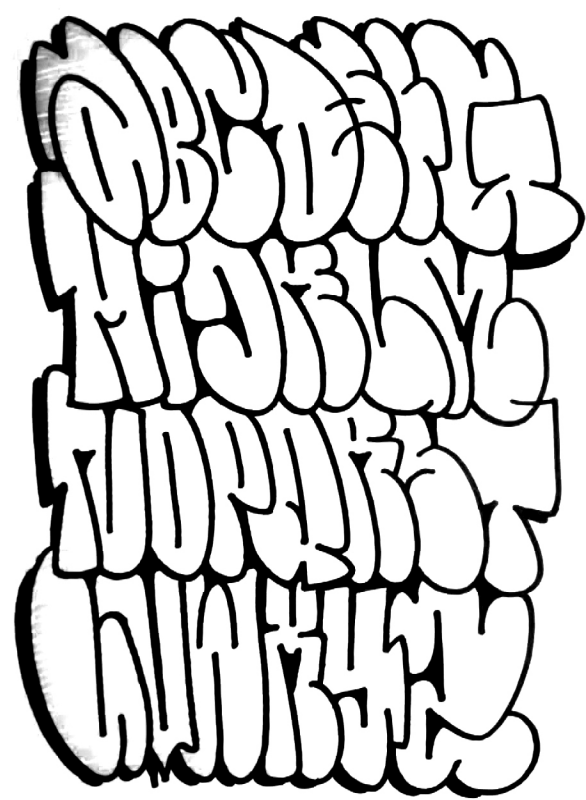
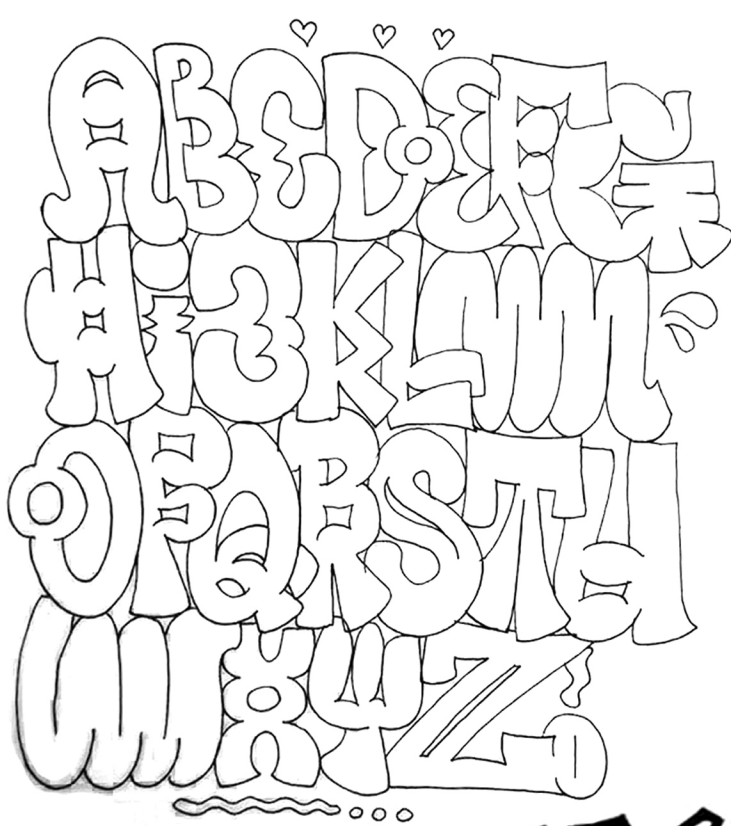
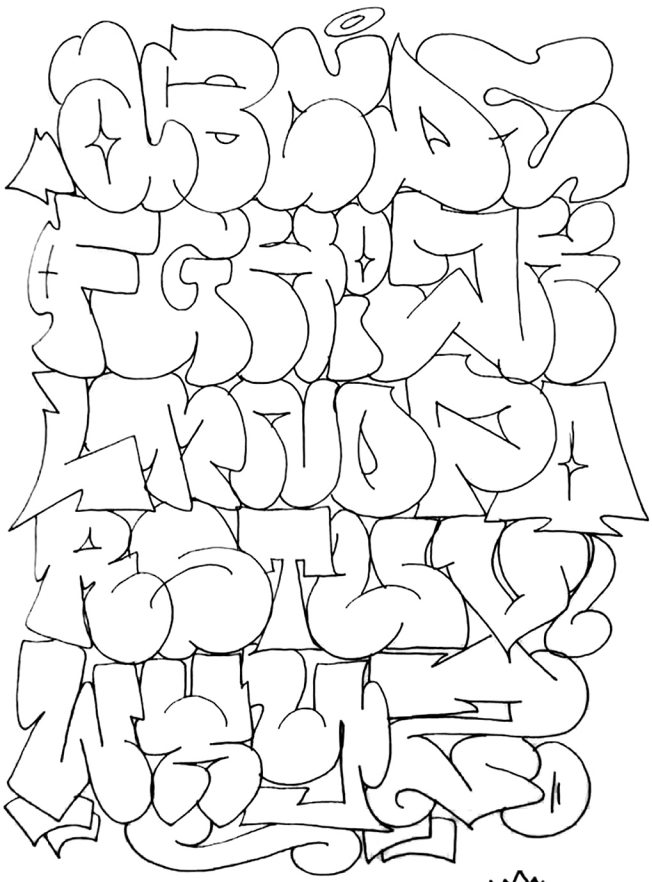


I

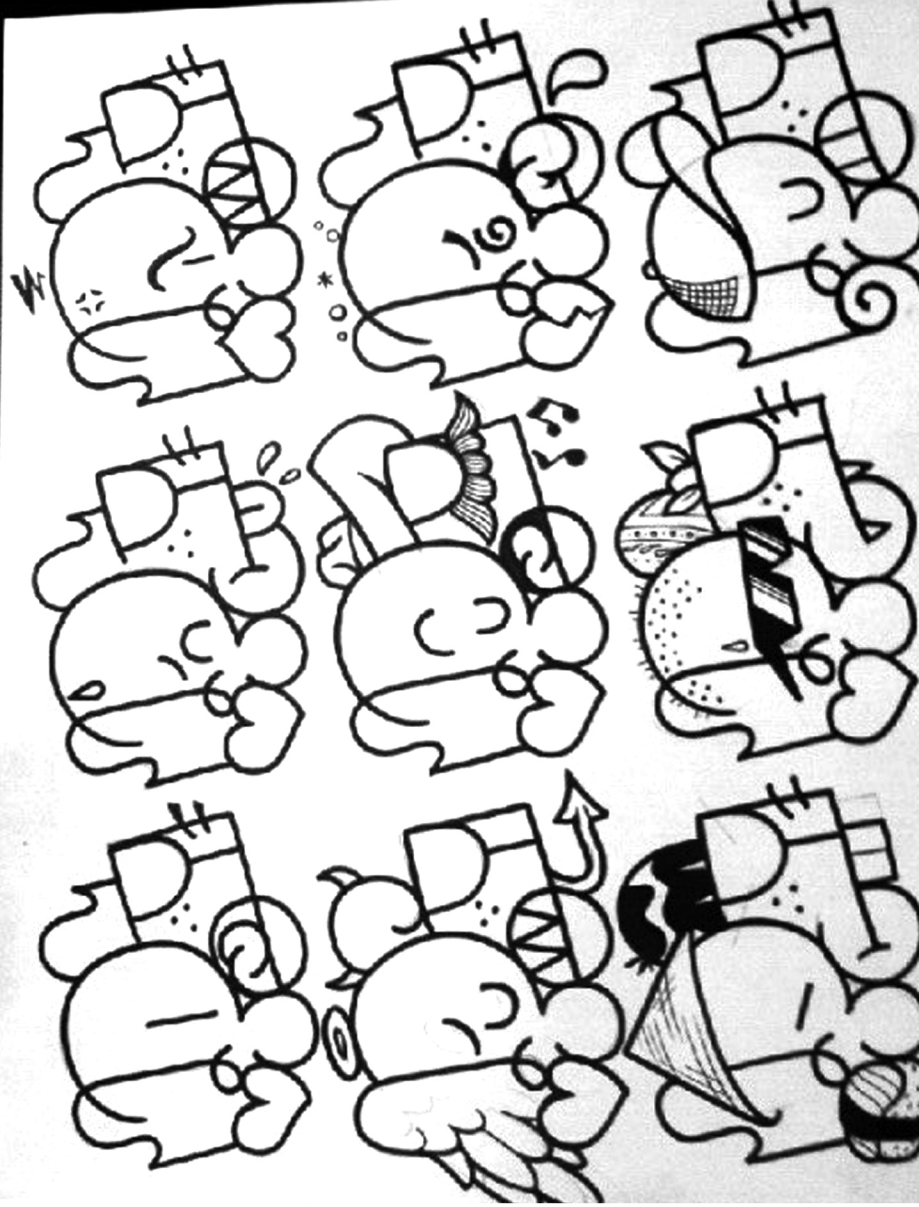


J



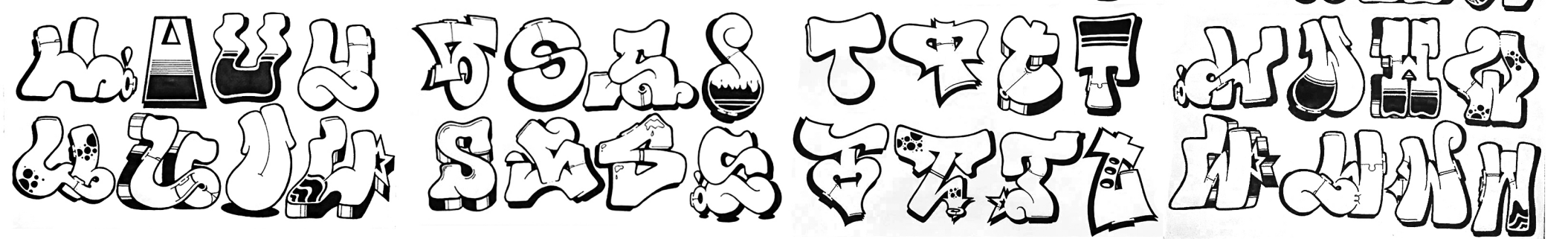




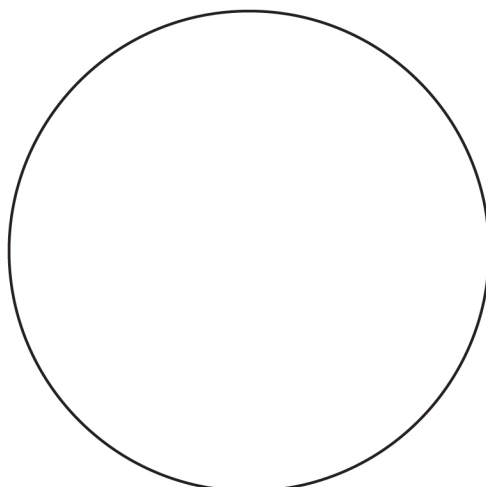
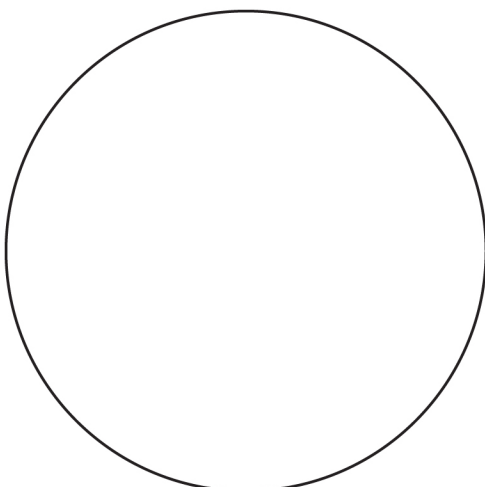
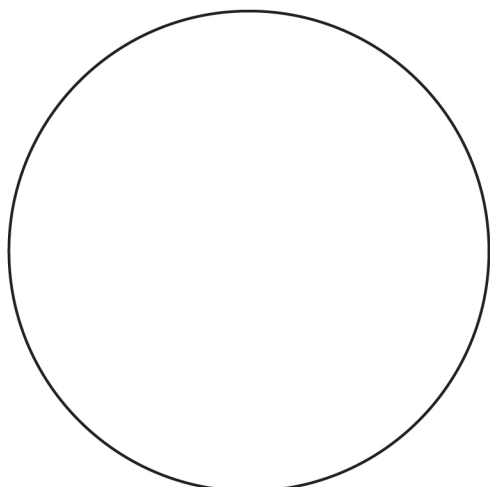
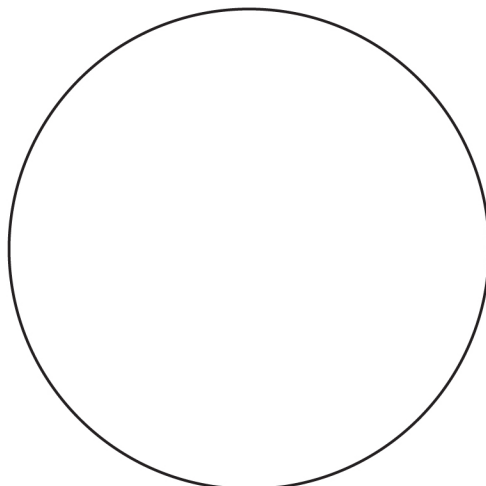
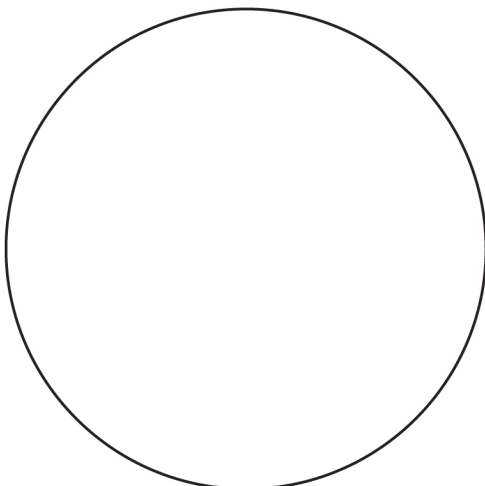
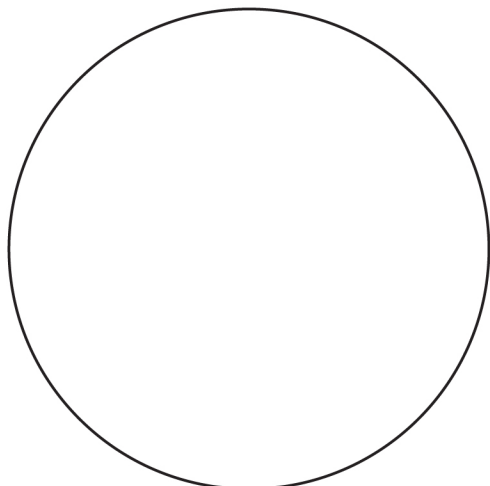
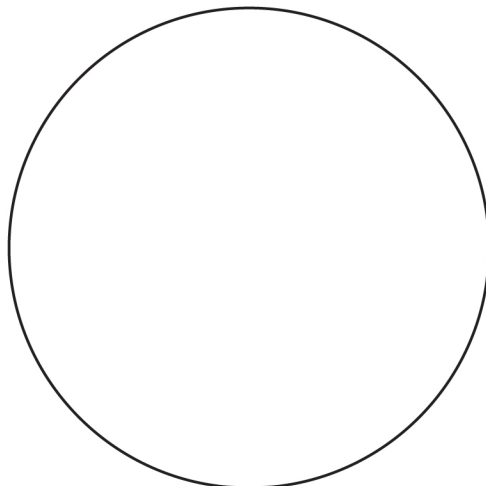
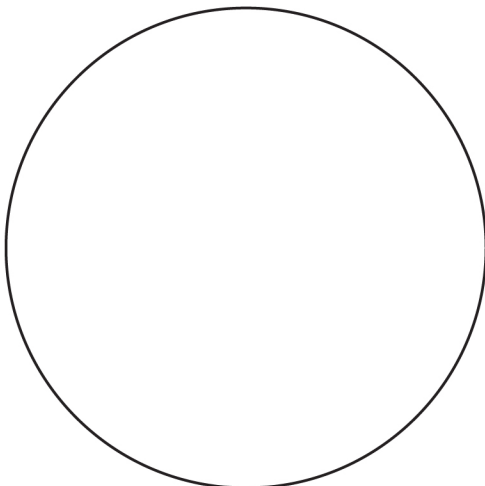
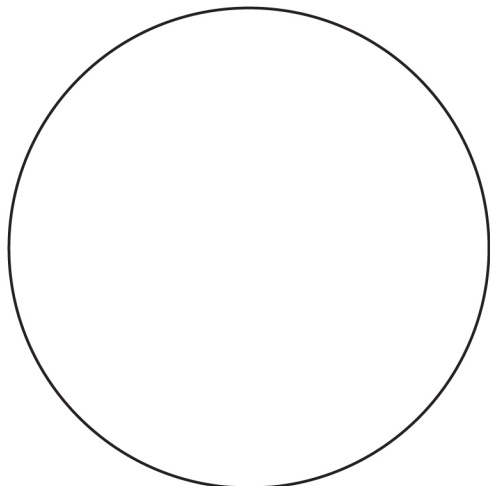
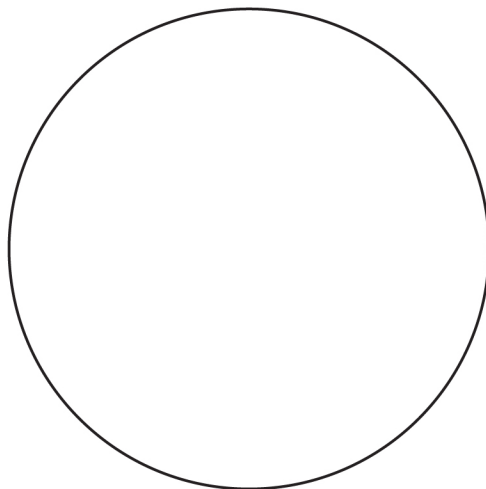
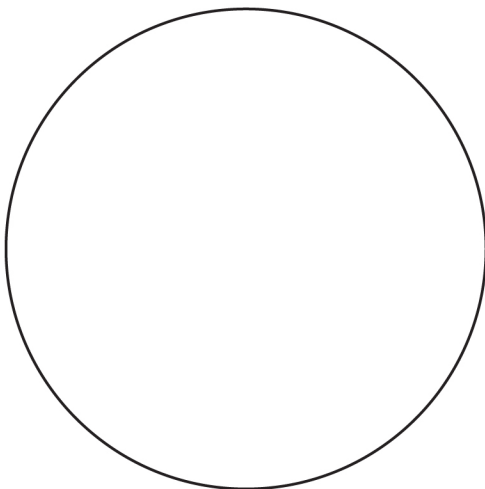
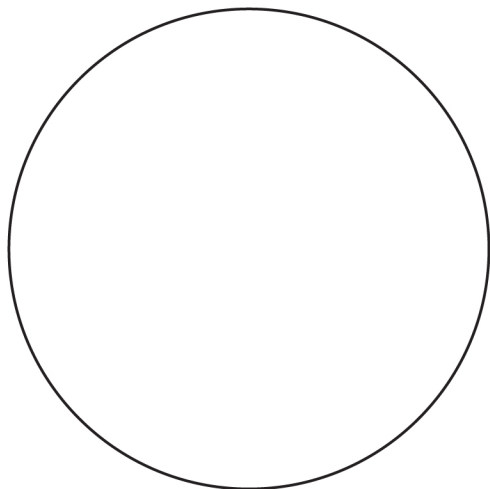


RUNNING FROM  
THE POLICE  
SINCE 1989



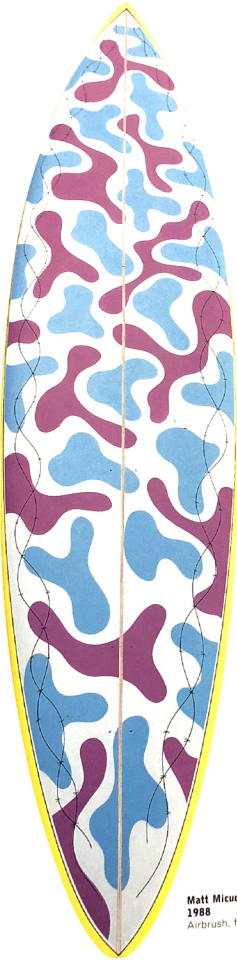








Matt Micuda,  
1988  
Airbrush, fluoro



Matt Micuda,  
1988  
Airbrush, fluoro

